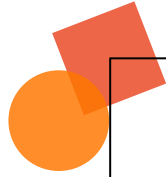




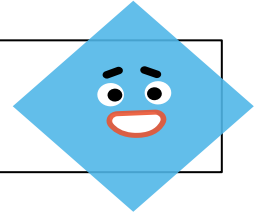
# **WELCOME**

**2023 Prep Information Session**  
**Wednesday 2 November 2022**  
**5.00pm via WEBEX**

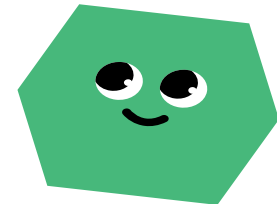
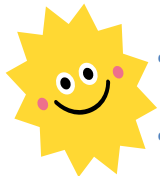
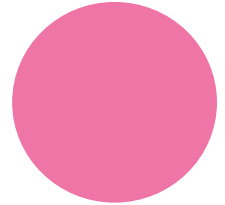
**This session will be recorded and shared with families.**



# Introductions - Vassie




- Vassie Vatsilas-D'Arcangelo-Co-Principal (Mon, Tues & Wed)
- Terry Lawless-Co-Principal (Thur & Fri)
- Taxia Katsouranis-Assistant Principal
- Katie McClue-Assistant Principal
- Lindsey Delooze-Wellbeing Leading Teacher
- Joel Magnabosco-Sector Leader
- Kristen Kosowski-ICT/Communication Co-ordinator
- Russell Hunt-Parent Perspective
- Jacqueline Ceravolo-Their Care OSHC






## MISSION

To empower all students to learn at high levels to become successful, independent, lifelong learners.



## Acknowledgement of Country

We acknowledge the Traditional Owners of the land on which we meet today. We also pay respects to Elders past, present and emerging.

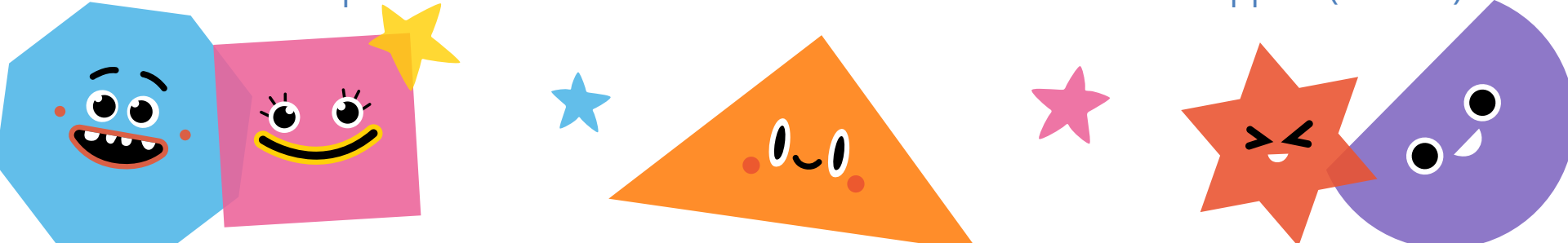




# Wembley PS Values - Vassie

- 
- Empathy
  - Inclusion
  - Resilience
  - Respect
- 

These values were developed with our school community in 2022, as part of our focus on School Wide Positive Behaviour Support (SWPBS).



The slide features a vibrant, cartoonish border. At the top left is a large pink star with a smiling face. To its right are two red rainbows with faces. Further right is a green star. At the top right is a blue hexagon with a face. In the bottom left is a green circle with a face. In the bottom right is a purple circle with a face and an orange star inside. Various other stars in purple, orange, yellow, and pink are scattered around the central text area.

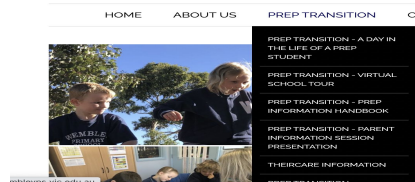
# Wembley PS as a Professional Learning Community

At Wembley PS we focus on the three big ideas of a Professional Learning Community (PLC):

1. All students learning at high levels
2. A focus on collaboration
3. A focus on results

# Information Booklet - Vassie

- Parent Information Booklet-on WPS website on [Prep Transition tab](#)
  - Voluntary Parent Curriculum Contributions and Levies
  - Permission/Consent Forms-soft copies
  - Uniform Ordering arrangements
  - You can find the Wembley Uniform Policy on our website
- 
- UNIFORMS:
  - Please see the uniform brochure attached to sentral email on 5/10/22
  - Link for ordering uniforms: [https://www.rhsports.com.au/product/school\\_wear/wembley\\_ps](https://www.rhsports.com.au/product/school_wear/wembley_ps)





# CURRICULUM OVERVIEW - JOEL

- **Victorian Curriculum:**

- English

Reading, Writing, Speaking & Listening

- Mathematics

Number & Algebra, Measurement & Geometry, Statistics & Probability

- Concept Learning

Science, Humanities, Technologies, Personal & Social Capabilities

- Social Skills

Resilience, Rights and Respectful Relationships

A decorative border surrounds the central text area. It includes a green hexagon with a face at the top left, a blue star at the top left, a yellow semi-circle with a face at the top center, a green star at the top right, a purple crescent moon with a face at the top right, a purple star with a face on the left, a red star on the left, a pink star on the right, a pink crescent moon with a face at the bottom left, a blue star at the bottom left, an orange triangle with a face at the bottom center, a yellow star at the bottom right, and a blue diamond with a face at the bottom right.

## SPECIALIST PROGRAMS - JOEL

- French Language
- Physical Education
- Visual Arts
- Performing Arts (Music)

\*All students will participate in one lesson of each specialist program weekly

We are researching a **STEM program** to be implemented once the new building is complete in 2023-2024. (Science Technology Engineering Mathematics)



A decorative border surrounds the central text area. It includes a green hexagon with a face in the top-left, a yellow semi-circle with a face at the top, a purple crescent with a face in the top-right, a pink crescent with a face in the bottom-left, an orange triangle with a face at the bottom, and a blue diamond with a face in the bottom-right. Various colored stars (blue, green, yellow, orange, pink) are scattered throughout the border.

## REPORTING TO PARENTS - JOEL

- Sentral Markbook

Reporting online against Essential Learnings

- End of Semester Reports

Reporting against the Victorian Curriculum at the end of Term 2 and Term 4

- Parent-Teacher Interviews

Early Term 1: Meet & Greet between parents and teachers

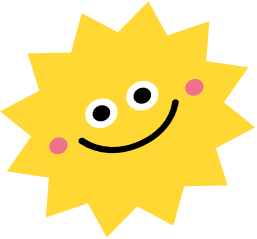
End of Term 2: Student-Led Conferences or Parent-Teacher Interviews to discuss progress and goals

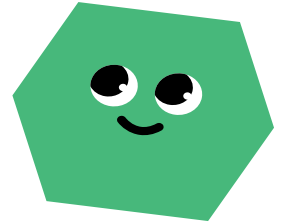


# WELLBEING AT WEMBLEY - LINDSEY

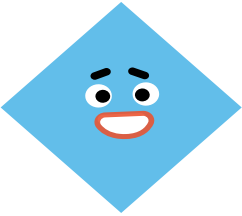


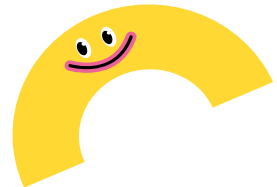
**We have a variety of levels of support for all students:**

- 
- Class teacher
  - Sector Leader
  - Assistant Principal
  - Wellbeing Leading Teacher
  - Mental Health and Wellbeing Coordinator
  - Wellbeing Dog/s
  - School Nurse



## **Supports in school:**

- 
- Support to staff across the school (advice / strategies / class observations / whole school practises)
  - Support to students at school (small social skills group, 1:1 check ins)
  - Support for families
  - Working with outside agencies, where appropriate
  - Individual Education Plans (IEP's) developed for students with disability and/or koorie funding
  - SSGs once per term, where appropriate, and support for developing IEPs
  - School Wide Positive Behaviour Support (SWPBS)
  - Breakfast club

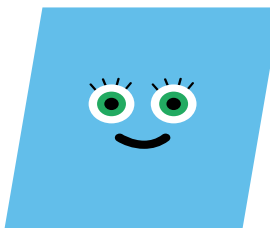
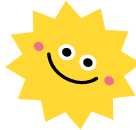
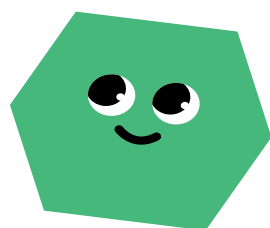





# STUDENT WELLBEING & ENGAGEMENT - LINDSEY

Your child's wellbeing is paramount to learning.

It's important to share with us and needs or concerns, in order to support you and your child.

- 
- 
- **Student Support Services (SSS)** Student support services comprise a broad range of professionals including psychologists, speech pathologists and social workers. They work as part of an integrated health and wellbeing team, focusing on providing individual support on a triage system.
  - **Program for Students with Disabilities** The Program for Students with Disabilities (PSD) provides funding to assist schools to support eligible students with disability and high needs. A process of assessment is undertaken and then assessing against criteria to satisfy one of the seven categories.
- 
- 



# Take Home Satchel Information Taxia

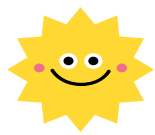


Your child will bring their satchel home after  
their 2nd Prep transition day!

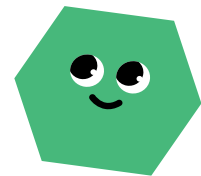


November 9th & 23rd





# TAKE HOME SATCHEL PREPARATION - TAXIA



Your child will be required to bring their reading satchel to school each day.

Inside your child's reading satchel they will receive;

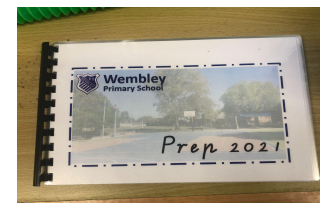
**A take home book** – please take the time to read this book with your child.

Encourage them to hold the book, turn the pages and read the story.



We don't expect them to be able to read yet, however we'd like you to encourage good reading behaviours.

They'll receive a **Prep Social Story** about Prep life at Wembley.

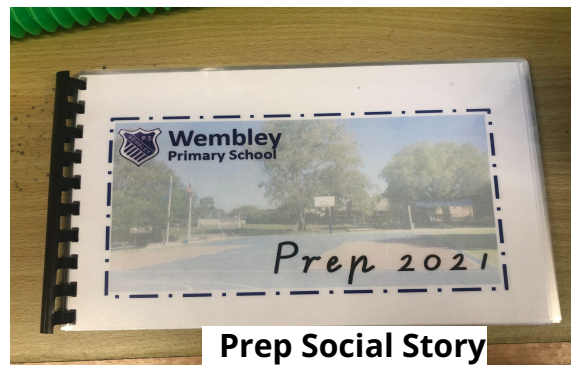


This is a great social story to get them ready for prep.

You'll also receive an **alphabet placemat** with your child's name written on it in Victorian Cursive Font. This is the font we use and teach in Prep and across the school. Please put it up somewhere where your child can look at it each day and recognise their name.



Reading Satchel and take home book



Prep Social Story



Alphabet Placemat

# TAKE HOME SATCHEL PREPARATION - TAXIA

**We encourage you and your child to familiarise yourselves with the satchel and what is inside.**

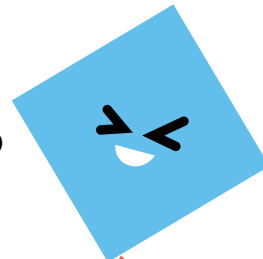
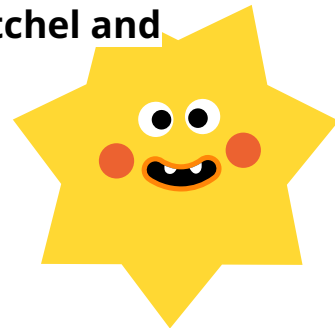
- We want your child/ren to be excited about coming to school.
- We certainly are!!!

**Lastly, next year your child will get a special key ring**

- This key ring belongs in your child's Reading Satchel.
- The key ring includes high frequency words, often read in books and used in your child's writing. New words are added to the key-ring once they are introduced. We use the key ring in many ways – automatic recall (reading), to support writing, spelling, handwriting, etc.

You'll be able to revise them with your child each night, and over time, ask them to spell them, or use them in a sentence.

You'll receive more information about the keyring, reading satchel and our **Take-Home Reading Program** at the start of term 1.



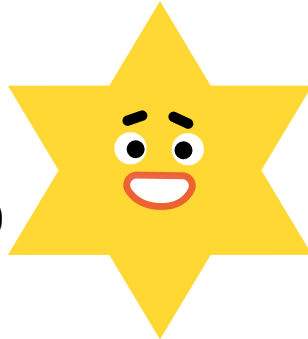
# Out of School Hours Care Program



## Before and After School Care

If you require before or after school care, we ask that you contact TheirCare on 1300 072 410

or [wembley@theircare.com.au](mailto:wembley@theircare.com.au)



## Jacqueline Ceravolo

Or send an email to [info@theircare.com.au](mailto:info@theircare.com.au) should you require assistance with registrations or bookings.





# Communication at Wembley - Kristen

1

**Newsletter**

2

**Website**

3

**Sentral**

4

**Qkr! Lunch  
Orders**

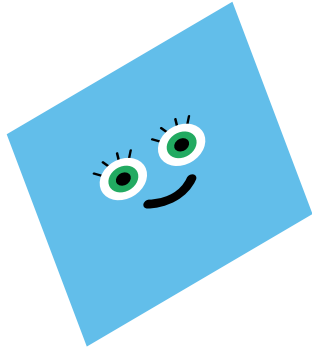
5

**Prep Assessment  
Interviews**

**Facebook:** [facebook.com/WPS4788/](https://facebook.com/WPS4788/)  
**Instagram:** @wembleyps4788



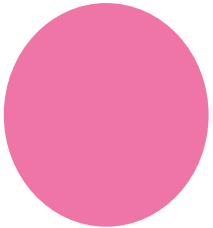
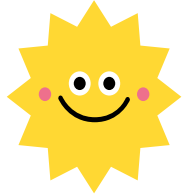
# A PARENT'S PERSPECTIVE



**Russell Hunt**

**Father of:**

**Evie MADDY-HUNT in Year 2**  
**Tilly MADDY-HUNT in Year Prep**





# SPECIAL REMINDERS - Taxia

## 2022- 2023 Prep Transition Timeline

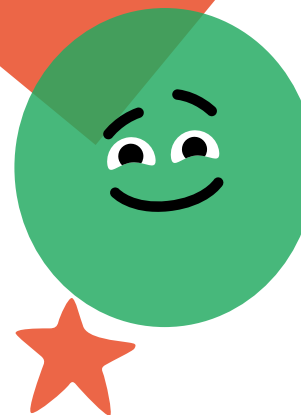
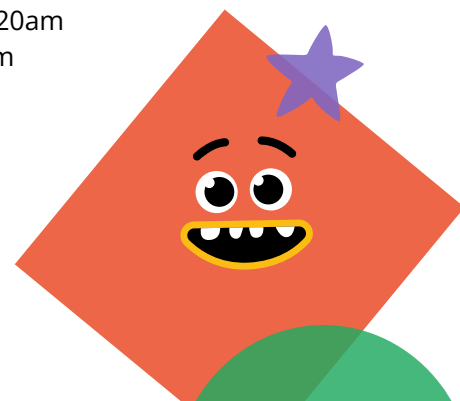
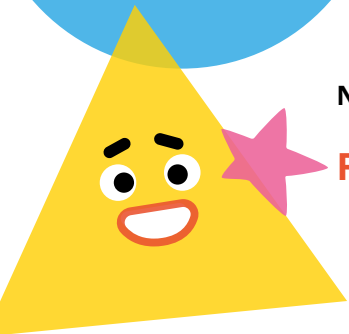
- Prep Transition Morning 1: Wednesday 9 November 9am – 10.20am
- Prep Transition Morning 2: Wednesday 23 November 9am – 10.20am
- Prep Family Gathering: Wednesday 30 November 5pm – 6pm

### **Prep Assessments in 2023, by appointment:**

- Prep Assessment – no school for Prep students Monday 30 January 2023
- Prep Assessment – no school for Prep students Tuesday 31 January 2023
- Prep Assessment – no school for Prep students Wednesday 1 February 2023
- Prep Assessment – no school for Prep students Wednesday 8 February 2023

**NO SCHOOL FOR PREP CHILDREN ON WEDNESDAYS IN FEBRUARY**

**First day of school for Prep - Thursday 2 February 2023 at 9.00am**





# THANK YOU!

Who has the first  
question?